

# Alliance Cam Catch

Cam catch

Suitable for:

PVCu



TIMBER



**Alliance is a security cam catch capable of achieving PAS 24 (dependent on window design), with a front facing lock.**

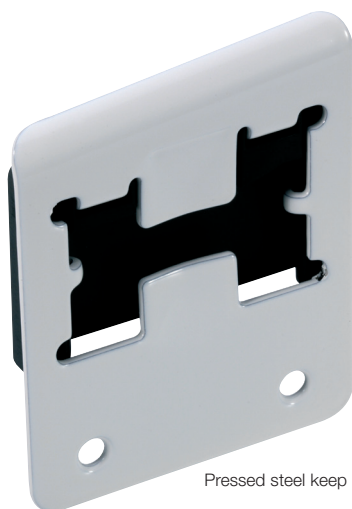
Alliance is suitable for all vertical sliding windows made from PVCu or timber and has various flat and cast keep designs suitable for all profiles. Available in a variety of plated or painted finishes.



Alliance with cast keep

## Features and Benefits

- Locking or non-locking versions
- Front facing lock
- Spring loaded to ensure sash clearance
- Various keep designs available
- Capable of achieving PAS 24 (dependent on window design)
- Interlocking design for increased security
- Available in painted or plated finishes



Pressed steel keep



Cast keep



Cam catch - white paint

Product	Product Code
Alliance Cam Catch – non-locking	TL100DM
Alliance Cam Catch – key locking	TL100
Standard Cast Keep	TL120
Wide Cast Keep	TL121
17mm Pressed Steel Keep	TL122
30.5mm Pressed Steel Keep	TL124
38mm Pressed Steel Keep	TL125

### Manufactured from

Zinc Alloy to BS EN 1774 ZL3

### Recommended screws

4mm (No.8) countersunk head or equivalent

### Standards

Please contact us for the latest test results.

### Finishes

Suffix product code with:

-020 (white paint), -818 (bright nickel), -102 (albrafin gold), K-023 (brown paint), -825 (satin chrome)

**NOTE:** Plated finishes are not suitable for use in coastal or highly corrosive environments.

### More information

enquiries@titon.co.uk / 01206 713801

Cast Keep	A'	B'	Pressed Metal Keeps	C'
Standard Cast Keep	4.5	30	17mm Pressed Steel Keep	17
Wide Cast Keep	9.5	35	30.5mm Pressed Steel Keep	30.5
			38mm Pressed Steel Keep	38

