

ALU Tape – Data Sheet

Titon

HRV Q Plus

Part Number

89705 – 50mm wide

Construction

Finish: Bright aluminium foil

Adhesive: Rubber/resin

Release Paper: High quality siliconised paper

The elongation is 7%, aluminium only.

Preparation

1. Surfaces to be bonded must be clean, dry and free from dust, grease and loose materials. If necessary, wipe surfaces sparingly with a cloth dampened with a ketone-free cleaner and allow to dry for at least an hour before tape application.
2. The butt joints of insulation sections should be positioned together without gaps to ensure an adequate bond.
3. Select a tape width suitable for the application. A width of 50 mm is suitable for closely positioned, flat sections. Otherwise, select a tape the thickness of the insulation plus 50 mm to allow for the exposed cut edge.

Application

4. Remove the release paper from a section of the tape, taking care not to touch the adhesive surface. Align the tape centrally over the joint. Pull the tape tight and then press down well over the entire join.

Specifications

Article code:	ALU{width}
Standard length:	45 mtr
Standard thickness:	25-28 microns (uncoated foil) (63-66 microns incl. adhesive)
Standard width:	050 and 075mm (100mm on request)
Application temperature:	Above +5 °C
Service temperature:	-10 °C to 90 °C
Operating pressure:	up to +1000 Pa

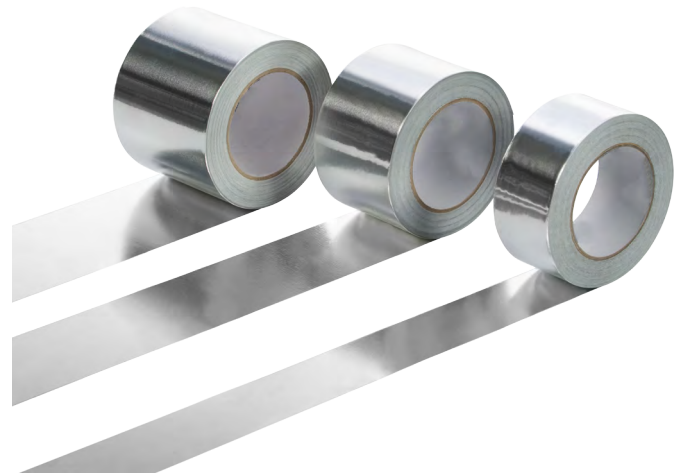
Classifications

UK (BS476): Part 6 (Pass) & 7(Class1) & Building regulations: Class 0

ALU TAPE showed low VOC contents in a test specified in LEED 2009 EQ c 4.1 (adhesives and sealants).

The VOC content is below the limit value specified as 30 grams/litre (less water)

for 'Metal to Metal Adhesives': VOC g/l: 2



Storage

ALU TAPE

Store for up to 12 months from date of manufacture when stored in original, unopened packaging under cool, dry conditions within the temperature range +10 °C to +30 °C and out of direct sunlight

Adhesion

Peel adhesion to steel: Initial: 20 - 25 N/25mm, 24 hours: 25 - 30 N/25mm

Ultimate Tensile Strength: Approximately 90 N/25mm² (aluminium only)

Surfaces must be clean and free of moisture and foreign contamination; a remote trace of moisture will seriously affect adhesion.